



*Equal Fun For Everyone*

# Strategic Growth and Development For the Future



**Long Range Plan  
May 1, 2011 –  
April 30, 2016**

Serving the communities of Bloomingdale, Carol Stream, Glen Ellyn, Naperville,  
Roselle, Warrenville, West Chicago, Wheaton, and Winfield.

Dear WDSRA Families and Friends,

This year marks the 35th anniversary year of the Western DuPage Special Recreation Association. Over these years, WDSRA has grown to be a leader in the field setting the bar high for recreational programming of individuals with special needs.

WDSRA's rich past includes: strong leadership providing guidance and vision, aggressively meeting the increasing demand for services across a variety of disabilities, growth in innovative and expanded programming, a Foundation focused on providing consistent financial support, supportive member park districts making WDSRA an integral and valuable community resource, and many partners who recognize the importance of programming for the special needs community.

Committed to the future, WDSRA's plan for strategic growth and development reflects a resolute blueprint to continue to lead the field, provide the best programs and services possible, and to be responsive to the evolving needs of our families and communities.

We invite you to celebrate our rich past and partner with us for a future full of *Equal Fun For Everyone*.



## Table of Contents

Open Letter	2
About WDSRA	3
Therapeutic Recreation	3
Long Range Goals	4
Wish List	5
Long Range Financial Plan Capital Expenditures Participation	5
Participation	6
Participants & Facilities FY09-10	7
Special Education Statistics	8
Leadership & Staff	9
WDSRA History	10-II
Partners	Back Cover



**Western DuPage  
Special Recreation Association**  
116 N. Schmale Road  
Carol Stream, IL 60188  
630-681-0962  
www.wdsra.com

*Equal Fun For Everyone*

## THANK YOU

We would like to acknowledge the many resources and people whose contributions and unique insights were used in creating the WDSRA Long Range Plan including:

- Long Range Plan Committee Members
- 2006 Board Vision Session
- 2008 Needs Assessment by Leisure Vision
- 2009 Part-time Staff and Participant/Family Goals Survey
- 2010 Participant/Family and Member District Goals Survey
- Strengths, Weaknesses, Opportunities, and Threats Analysis (SWOT)

### SWOT Team:

Angela Adkins, NAMI DuPage  
Mike Benard, Wheaton Park District  
Arnie Biondo, Carol Stream Park District  
Dr. John Butts, Reed Custer School District 255  
Diane Dillow, Warrenville Park District  
Kathleen Esposito, Glen Ellyn Park District  
Jim Gallo, WDSRA Foundation Board  
Sharon Gedvilas, WDSRA  
Drew Glassford, Turning Pointe Autism Foundation  
Carrie Hauptert, Bloomingdale Park District  
Jane Hodgkinson, WDSRA  
Sandy Hutchins, Northeastern Illinois Special Olympics



Lea Jackman, WDSRA  
Sarah Ludwig, WDSRA  
Ray McGury, Naperville Park District  
Nancy Miner, WDSRA  
Ray Morrill, Wheaton Park District  
Mark Pawlowski, Winfield Park District  
Dana Plazyk, No Excuses Mobile Marketing  
Pat Price, The Price Group Inc.  
Martha Rademacher, PDRMA  
Mike Reilly, Naperville Park District  
Rob Sperl, Wheaton Park District  
Brad Wilson, Naperville Park District  
Peggy Wilson, WDSRA

## ABOUT WDSRA

The Western DuPage Special Recreation Association serves more than 4,500 individual children and adults with special needs in over 1,500 recreation programs, trips, and special events annually. Additionally, WDSRA reaches in excess of 15,000 people through services, events and community awareness.

Special Olympics and adapted sports programs, dance and art programs, as well as social clubs and camps are offered. In addition to providing a full range of inclusion services for any program offered through a participating park district, as a service to the community at large, we offer disability awareness programs that educate groups, such as schools, about living with a variety of disabilities.

WDSRA is a nationally acclaimed, not-for-profit organization and a cooperative extension of nine park districts including Bloomingdale, Carol Stream, Glen Ellyn, Naperville, Roselle, Warrenville, West Chicago, Wheaton, and Winfield.

### WDSRA Board of Directors 2010-II

Gary Major, Chairperson, West Chicago Park District  
Carrie Hauptert, Bloomingdale Park District  
Arnie Biondo, Carol Stream Park District  
Kathleen Esposito, Glen Ellyn Park District  
Ray McGury, Naperville Park District  
Rob Ward, Roselle Park District  
Diane Dillow, Warrenville Park District  
Mike Benard, Wheaton Park District  
Mark Pawlowski, Winfield Park District

### Mission

The Development of Individuals through Recreation

### Vision

*Equal Fun for Everyone*

### Core Values

**Staff** - We recruit, train, nurture and reward the best staff and volunteers our resources will allow.

**Members and Participants** - We recognize, respect and respond to the recreational and developmental needs of our participants for our member park districts.

**Innovation** - We explore and implement new procedures, programs, technologies and opportunities.

**Leadership** - We are the leader in our field and will readily share our knowledge, experience and skills with others.

**Excellence** - We provide the highest quality of service, programs and events possible.

### WDSRA Foundation Mission

The WDSRA Foundation was developed to establish long-term programs of giving from individuals, businesses and organizations to further the goals and ideals of the Western DuPage Special Recreation Association. The Foundation is a 501(c)3 not-for-profit organization.

## THERAPEUTIC RECREATION AT WDSRA

WDSRA is firmly committed to the agency's mission: the development of individuals through recreation. High quality special recreation services provide an opportunity to participate in a variety of activities. WDSRA offers both parallel programs and inclusion services to meet the leisure and recreation needs of residents who have a special need. Inherent in the provision of those opportunities is the element of choice: all individuals, regardless of their special needs have a right to pursue the leisure interests of their choice.

### Parallel Programs

Parallel programs take place in the community in park district facilities "beside or parallel to" park district programs. Most of the participants of parallel programs have a special need. Offerings are similar in nature to the programs being offered by the park districts. The target market for these programs includes children, teens and adults who have special needs. Currently, the largest user group for parallel programs is teens and adults. Special Olympics and wheelchair basketball are examples of parallel programs. There are a number of reasons that families may choose parallel programs. One of the common reasons is that the participants form friendships with other participants. These friendships sometime last a lifetime. Families want social opportunities for their children and

park districts may lack age appropriate programs. Parents also want programs that are implemented by staff trained for work with those who have special needs. They can adapt the activities to meet the needs of the participants. Staff-to-participant ratios tend to be lower in parallel programs than in an inclusive setting.

### Inclusion Services

Through inclusion, individuals who have special needs have the ability to participate with their peers from the community in programs offered by their local park district. WDSRA staff ensure that any accommodations which might be necessary for successful participation are secured so that individuals may experience success. Emphasis is placed on maximizing independence while utilizing the most nonintrusive supports possible. Currently the largest user groups in the area of inclusion are early childhood and elementary-aged children.

Families report various reasons for selecting an inclusive experience among which include: 1. the ability to practice and to learn skills in a natural setting using same age peers as role models; 2. the ability to create and to foster friendships and social networks which, in turn, fosters a sense of belonging in one's community; and 3. an increased number of leisure choices within their community.

# LONG RANGE PLAN GOALS

## Recruit, Train, Develop & Retain A Strong Professional Staff

- Recruit bilingual staff to increase communications with Hispanic population
- Develop training programs to facilitate promotion from within the agency
- Implement cross-training program
- Develop formal volunteer recruitment and retention program
- Cultivate strong internship program
- Enhance training for part-time staff
- Educate member districts' staff on promoting special needs services
- Coordinate professional development efforts

## Improve Use of Technological & Administrative Resources

- Commit financial resources to obtaining facility space in Naperville
- Centralize database
- Enhance website
- Analyze participants' specific service level needs to better determine staffing ratios
- Maximize "green" efforts

## Develop Relations With Community Partners

- Include partners in annual goal survey cycle
- Foster relations with charitable organizations, community hospitals, and faith based organizations
- Seek out privately-owned facility space usage
- Host cooperative trainings with member districts
- Provide on-site registration opportunities for larger residential settings

## Expand Services Geographically & Programmatically

- Locate new program sites in south Naperville
- Maximize programming at Ackerman Park in Glen Ellyn, Miracle Field in Roselle and the new Carol Stream Recreation Center
- Study 2010 demographic census data to project programming needs for the future
- Develop outreach plans to engage underserved communities
- Expand successful programs such as DuPage Boomers, Rec & Roll, Troop, Drop-in, Adaptive Sports, Special Olympic Sports, etc.
- Analyze currently unmet program opportunities

## Increase Awareness of WDSRA Programs, Services, & Needs

- Develop an awareness campaign
- Create a measurement tool to rate awareness
- Engage member district communities to include WDSRA questions in their community needs assessments
- Produce bilingual marketing materials to reach underserved populations
- Improve communications with member districts' Boards of Commissioners to focus on the value of WDSRA services to their tax paying community members
- Research social networks tools
- Increase website utilization
- Increase visual awareness at member district facilities
- Target niche audiences

## Foster The Culture of Fundraising/Philanthropy Throughout the Community

- Establish long-term scholarship campaign
- Promote scholarship opportunities including Adopt-A-Participant Program
- Launch Building For Our Future campaign
- Combine Foundation's and Association's volunteer recruiting efforts
- Foster communications between the Association and Foundation Boards
- Explore alternative revenue resources



# WISH LIST

## Scholarships

*Participant Scholarships* Unlimited  
WDSRA provides scholarships to individuals who are financially unable to participate in programs. There are several scholarship programs from which to choose.

## Vehicles

*Wheelchair lift bus* \$ 15,000

## Equipment/Supplies

*Camping* \$500  
WDSRA sponsors weekend and weeklong camping trips. Equipment needs include: tents, coolers, lanterns and cooking supplies.

*Adaptive Equipment* \$500-5,000  
Equipment for physically impaired individuals include: handle balls, swim equipment, fishing and archery devices, sports wheelchairs, fitness videos and resource materials.

## Sports Programs

*Team Uniforms* \$1,500

*Sports Equipment* \$500  
WDSRA currently sponsors Special Olympics teams in 12 sports.

*Track & Field Meet* \$1,300  
An annual event for 200 local special athletes competing in track, field, and Very Special Olympics events.

*Tournaments* \$300  
WDSRA sponsors several area tournaments/meets.

## Dances

*Holiday Dinner Dance and Spring Fling* \$1,500  
For teens and adults, dances feature dinner, dancing and entertainment.

## Volunteer Incentive Program

*Volunteer Recognition* \$1,000

## Arts Program

*Arts Recital* \$750-1,000  
The arts recital is an annual event with over 50 handicapped artists showcasing their talents.

# LONG RANGE FINANCIAL PLAN FOR CAPITAL EXPENDITURES

	2009-10	2010-11	2011-12	2012-13	2013-14	2014-15	2015-16
<b>Building</b>							
Budget/ Projected	\$242,000	\$ 69,200	\$ 35,000	\$ 35,000	\$ 35,000	\$35,000	\$ 35,000
<b>Computers</b>							
Budget/ Projected	\$ 19,300	\$ 18,700	\$ 28,000	\$ 20,500	\$ 20,000	\$20,000	\$ 25,000
<b>Furniture &amp; Equipment</b>							
Budget/ Projected	\$ 20,260	\$ 29,860	\$ 20,000	\$ 18,000	\$ 20,000	\$18,000	\$ 20,000
<b>Vehicles</b>							
Budget/ Projected	\$ 64,000	\$ -	\$ 35,000	\$ 35,000	\$ 34,000	\$25,000	\$ 79,000
<b>Total</b>							
<b>Budget/ Projected</b>	<b>\$345,560</b>	<b>\$117,760</b>	<b>\$118,000</b>	<b>\$108,500</b>	<b>\$109,000</b>	<b>\$98,000</b>	<b>\$159,000</b>

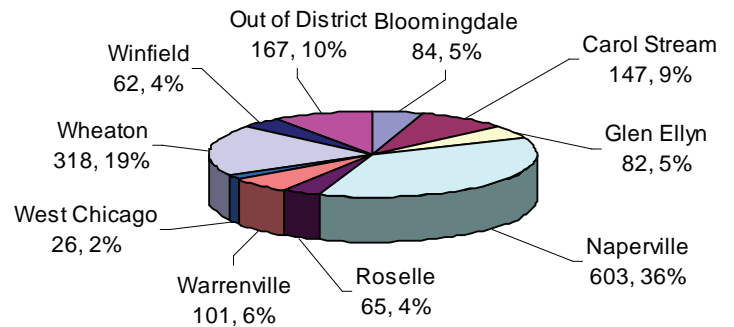
# PARTICIPATION

## Participation Graph

Year	Program	Inclusion	Foundation	Awareness	Total	Unique*
77-78	1079	-	-	-	-	272
78-79	1198	-	-	-	-	519
79-80	1187	-	-	-	-	587
80-81	1671	-	-	-	-	660
81-82	2865	-	-	-	-	1027
82-83	3078	-	-	-	-	1153
83-84	3067	-	-	-	-	1221
84-85	3867	-	-	-	-	1909
85-86	4098	-	-	-	-	1391
86-87	4957	-	-	-	-	1755
87-88	4605	-	-	-	-	1899
88-89	5220	-	-	-	-	2021
89-90	5879	-	-	-	-	1920
90-91	6658	-	-	-	6658	2710
91-92	7419	81	-	-	7500	2882
92-93	6889	101	-	831	7821	3093
93-94	6935	188	-	161	7284	3070
94-95	7439	321	258	152	8170	3225
95-96	7316	353	550	343	8562	4114
96-97	6954	377	932	1193	9456	5953
97-98	7215	357	690	1789	10051	5311
98-99	8179	353	799	2077	11408	5997
99-00	7102	364	807	1249	9522	4543
00-01	7709	533	763	1170	10175	4661
01-02	8056	689	537	1683	10965	5076
02-03	8819	639	628	2821	12907	6195
03-04	8179	710	562	1452	10903	5233
04-05	9220	855	484	3558	14117	6776
05-06	9425	990	666	2047	13128	6301
06-07	8868	1252	815	5408	16343	9600
07-08	10789	1478	885	2924	16076	8316
08-09	10904	1561	849	1411	14725	7089
09-10	10658	1655	896	1878	15087	7455

\* Unique participations include all unique registrations for programs, inclusion, foundation, and disability awareness.

## 2010 Inclusion Participations



## 2010 Disability Make-up of WDSRA Participants

ADD/ADHD*	3%
Aspergers Syndrome	3%
Autistic/PDD/ASD**	18%
Cerebral Palsy	5%
Early Childhood	3%
Hearing Impaired	2%
Learning Disability	2%
Mental Health	4%
Mentally Challenged	40%
Mutli-needs	10%
Physically Challenged	3%
Sensory Integration	2%
Speech & Language	4%
Traumatic Brain Injury	1%
Visually Impaired	1%
Youth at Risk	1%

\* Attention Deficit Disorder/Attention Deficit Hyperactivity Disorder

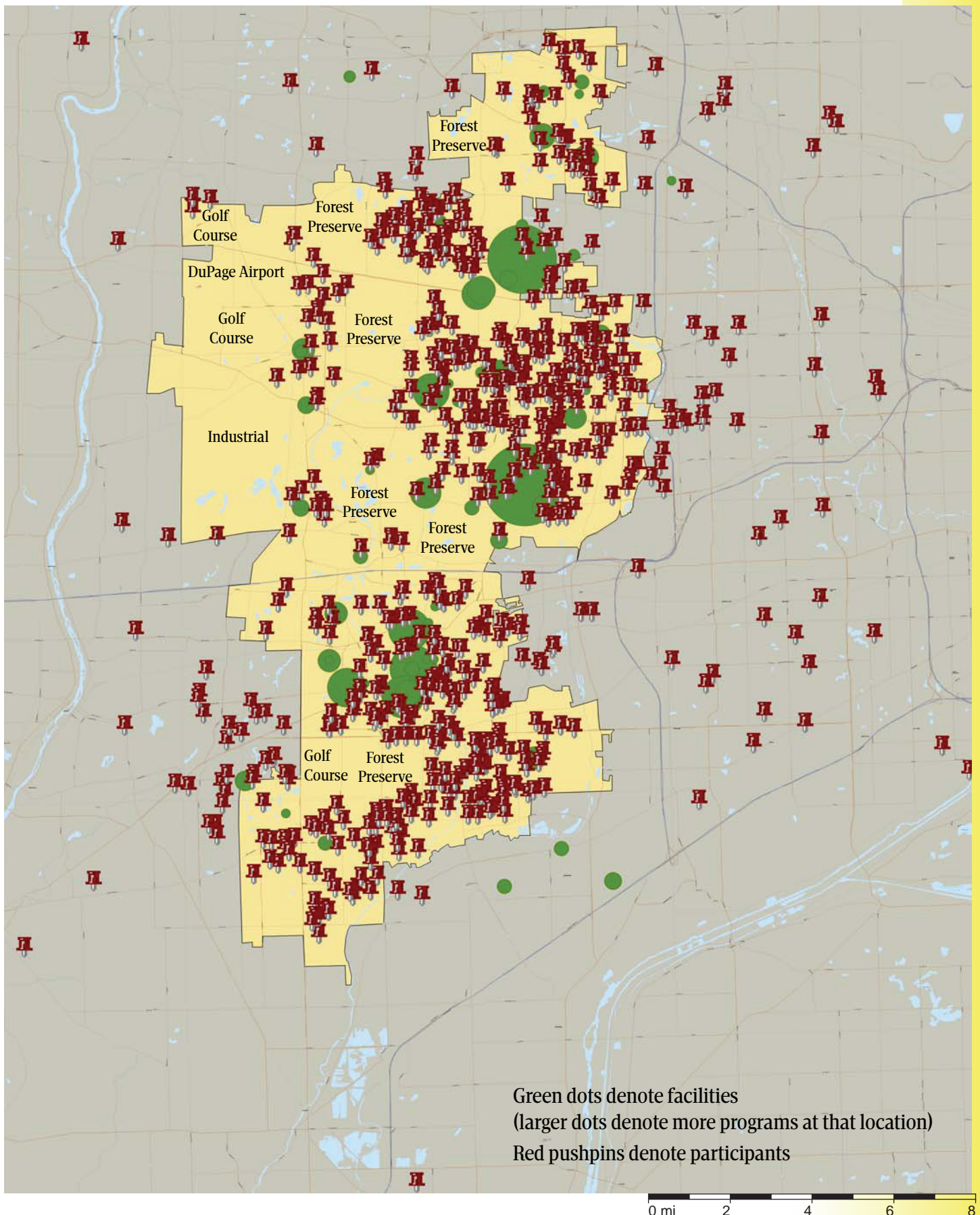
\*\* Pervasive Developmental Disorder/Autism Spectrum Disorder

## MEMBER PARK DISTRICTS

### 2010 Number of Programs Offered In Each Member Park District

Bloomington	24
Carol Stream	128
Glen Ellyn	53
Naperville	237
Roselle	25
Warrenville	13
West Chicago	33
Wheaton	193
Winfield	20
Other	240

# PARTICIPANTS AND FACILITIES FY 09-10



Copyright © and (P) 1988–2008 Microsoft Corporation and/or its suppliers. All rights reserved. <http://www.microsoft.com/mappoint/>  
Certain mapping and direction data © 2008 NAVTEQ. All rights reserved. The Data for areas of Canada includes information taken with permission from Canadian authorities, including: © Her Majesty the Queen in Right of Canada, © Queen's Printer for Ontario. NAVTEQ and NAVTEQ ON BOARD are trademarks of NAVTEQ. © 2008 Tele Atlas North America, Inc. All rights reserved. Tele Atlas and Tele Atlas North America are trademarks of Tele Atlas, Inc. © 2008 by Applied Geographic Systems. All rights reserved.

## SPECIAL EDUCATION STATISTICS

Public School District	Total District																						
	2002-03			2003-04			2004-05			2005-06			2006-07			2007-08			2008-09				
	A	B	C	A	B	C	A	B	C	A	B	C	A	B	C	A	B	C	A	B	C		
<b>NDSEC North DuPage Special Education Co-op</b>																							
#11 Medinah School District	140	757	18.5%	115	733	15.7%	127	773	16.4%	141	736	19.2%	137	744	18.4%	120	694	17.3%	100	682	14.7%		
#12 Roselle School District	113	731	15.5%	107	698	15.3%	111	692	16.0%	117	688	17.0%	116	706	16.4%	105	669	15.7%	99	691	14.3%		
#13 Bloomingdale School District	188	1453	12.9%	189	1446	13.1%	194	1472	13.2%	209	1412	14.8%	207	1384	15.0%	206	1318	15.6%	194	1238	15.7%		
#108 Lake Park High School	380	2839	13.4%	369	2921	12.6%	376	2962	12.7%	380	3026	12.6%	418	3067	13.6%	418	3063	13.7%	424	2778	15.3%		
NDSEC Co-op	1751	11651	15.0%	1719	11,688	14.7%	1741	11846	14.7%	1770	11965	14.8%	1784	11884	15.0%	1680	11525	14.6%	1638	11174	14.7%		
<b>SASED School Association Special Education Dupage</b>																							
#25 Benjamin School District West Chicago	130	1008	12.9%	125	970	12.9%	122	934	13.1%	105	919	11.4%	117	917	12.8%	121	888	13.6%	108	840	12.9%		
#33 West Chicago Elementary School District	661	3856	17.1%	639	3841	16.6%	658	3919	16.8%	645	3944	16.4%	673	4032	16.7%	642	4112	15.6%	631	4180	15.1%		
#34 Winfield School District	54	365	14.8%	56	433	12.9%	65	389	16.7%	72	380	18.9%	69	379	18.2%	59	355	16.6%	57	371	15.4%		
#94 Community High School District West Chicago	201	2722	9.5%	213	2746	9.9%	212	2746	9.9%	232	2732	10.9%	238	2716	11.0%	251	2730	11.8%	260	2032	12.8%		
SASED Co-op	4376	30610	14.1%	6642	46523	14.3%	6810	46157	14.8%	6938	46173	15.0%	6996	46168	15.2%	6911	45673	15.1%	6895	45358	15.2%		
<b>CASE Co-op Association for Special Education</b>																							
#41 Glen Elyn School District	480	3434	14.0%	458	3482	13.2%	479	3504	13.7%	484	3549	13.6%	449	3588	12.5%	462	3566	13.0%	447	3551	12.6%		
#87 Glen Elyn Township	978	8880	11.0%	1034	8944	11.6%	1074	9025	11.9%	1130	8998	12.6%	1154	8966	12.9%	1174	8949	13.1%	1212	8829	13.7%		
#89 Community Consolidated School District Glen Elyn	334	2451	13.6%	322	2379	13.5%	345	2345	14.7%	325	2250	14.4%	323	2209	14.6%	302	2138	14.1%	266	2090	12.7%		
#93 Community Consolidated School District Carol Stream	604	5069	11.9%	615	4900	12.6%	670	4669	14.3%	734	4517	16.2%	728	4303	16.9%	714	4249	16.6%	639	4074	15.7%		
CASE Co-op	3620	28080	12.9%	3608	27796	13.0%	3726	27503	13.5%	3794	27133	14.0%	3779	26915	14.0%	3760	26761	14.1%	3571	26357	13.5%		
#200 Community Unit School District Wheaton	2110	14294	14.8%	2143	14191	15.1%	2278	14125	16.1%	2288	14076	16.3%	2244	13885	16.2%	2187	13647	16.0%	2184	13546	16.1%		
#203 Community Unit School District Naperville	2248	19020	11.8%	2316	18933	12.2%	2383	18729	12.7%	2335	18697	12.5%	2267	18449	12.3%	2206	18211	12.1%	2097	18072	11.6%		
#204 Indian Prairie School District	2954	25795	11.5%	3207	26779	12.0%	3442	27705	12.4%	3512	28510	12.3%	3516	28764	12.2%	3518	29127	12.1%	3386	29466	11.5%		
<b>STATE OF ILLINOIS</b>	310,260	2,084,187	14.9%	317,129	2,090,006	15.2%	321,586	2,086,824	15.4%	322,541	2,111,706	15.3%	323,249	2,118,692	15.3%	318,478	2,113,435	15.1%	314,155	2,126,086	14.8%		
State																							

\*Column A represents the total number of Special Ed Students with IEP's. This includes self contained and non self contained classrooms.

\*Column B represents the total enrollment for the district.

\*Column C represents the percentage of Special Ed Students vs. Regular Ed Students

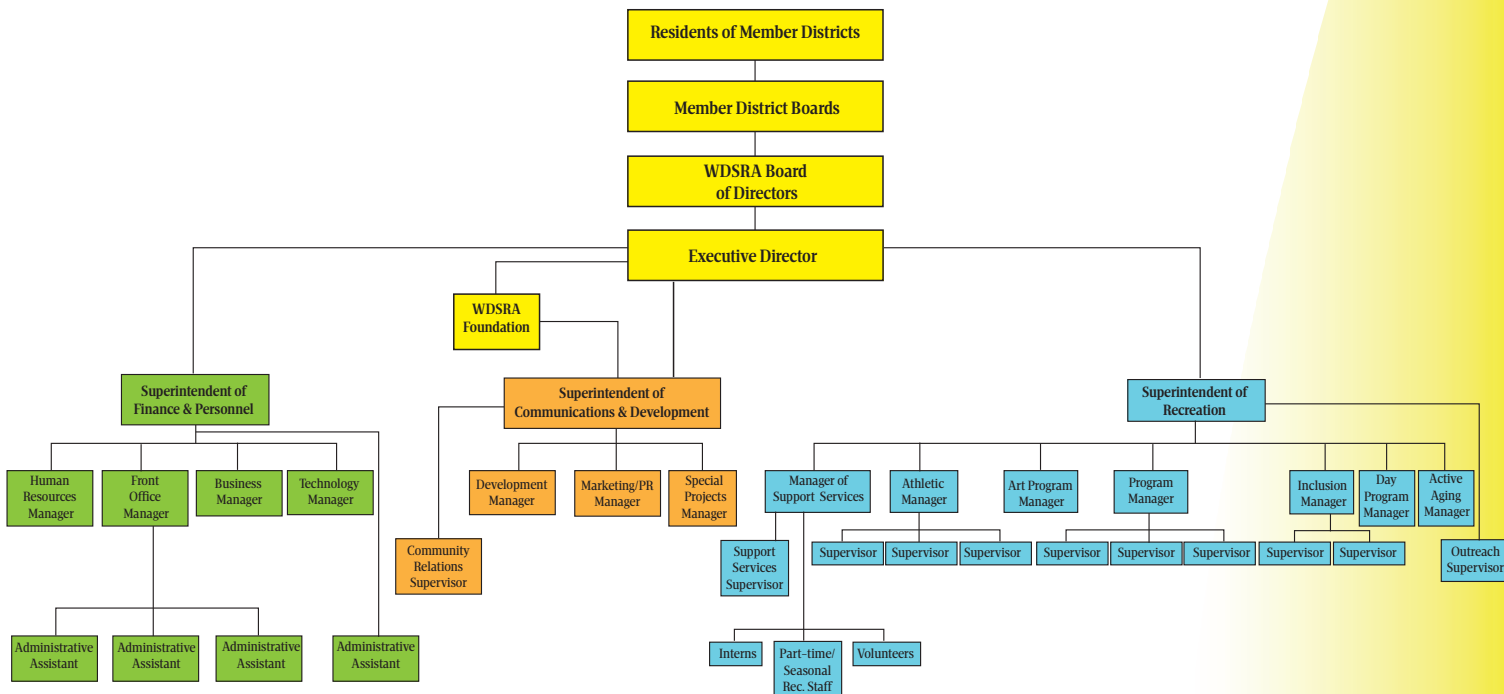
# LEADERSHIP & STAFF

## Full-time Staff

Jane Hodgkinson Executive Director  
 Sharon Gedvilas Supt. of Finance & Personnel  
 Lea Jackman Supt. of Comm. & Dev.  
 Nancy Miner Supt. of Recreation  
 Cindy Allston Development Manager  
 Mary Beck Front Office Manager  
 Gail Bettcher Human Resources Manager  
 Wendy Craven Support Services Manager  
 Steve Eckelberry Technology Manager  
 Tammy Kerrins Inclusion Manager  
 Curtis Lease Business Services Manager  
 Sherry Manschot Marketing/PR Manager  
 Jorie Meyer Program Manager  
 Lanie Munzing Special Projects Manager  
 Becky Prince Athletics Manager  
 Dori Sonaco Day Programs Manager  
 Dana Stewart Fine Arts & Facilities Manager

Peggy Wilson DuPage Boomers Manager  
 Ted Adatto Inclusion Supervisor  
 Amie Chrisman Program Supervisor  
 Jessica Griffin Program Supervisor  
 Kurt Hinterkopf Program Supervisor  
 Kevin Hosea Program Supervisor  
 Angie Kooima Program Supervisor  
 Jennifer Moulton Community Relations Supervisor  
 Dayell Muchowicz Support Services Supervisor  
 Inge Papaeliou Inclusion Supervisor  
 Jackie Salemi Program Supervisor  
 Cindi Swanson Outreach Supervisor  
 Kim Guerra Administrative Assistant  
 Sarah Ludwig Administrative Assistant  
 Joy Poling Administrative Assistant  
 Donna Raney Administrative Assistant

## WDSRA Organization Chart



## WDSRA History 1971- 2011

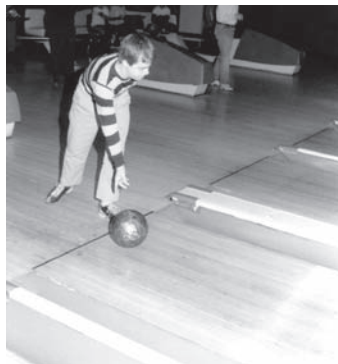


The Western DuPage Special Recreation Association has been providing “Equal Fun for Everyone” for the last 35 years. WDSRA was formed in 1976 by the Glen Ellyn, Naperville, West Chicago and Wheaton Park Districts so that people with special needs have more choices in recreation. That summer, a day camp program

was offered to 125 children with disabilities. Thirty-five years later, WDSRA now provides over 1,500 annual programs to more than 4,500 participants from nine communities, which now include Bloomingdale, Carol Stream, Roselle, Warrenville, and Winfield in addition to the four founding Park Districts.

### WDSRA's Highlights: 35 Years at a Glance

- 1976** Glen Ellyn, Naperville, West Chicago and Wheaton Park Districts form WDSRA in the fall. Barbara Sternfeld Singer is hired as first director.
- 1977** Member park districts of WDSRA approve the articles of agreement. First program offered is summer day camp. Leisure education classes in the schools start.
- 1978** WDSRA and Marianjoy Rehabilitation Hospital begin cooperative programs for Traumatic Brain Injured and people who had had strokes. High Hopes was the social club for the Traumatic Brain Injured.
- 1979** First cooperative summer program with School Association for Special Education in DuPage County for Trainably Mentally Handicapped Students.
- 1980** The first track and field meet is held at North Central College.
- 1981** Jane Hodgkinson becomes second director. Programs expanded to offer to mentally ill adults, Special Olympics, vacation trips, deaf/blind programs, geriatric programs and Boy Scouts. Joint workshops for physically challenged offered with Marianjoy in archery, tennis, and golf.
- 1982** WDSRA named Gold Medal winner for Excellence in Programming from National Recreation and Park Association and National Sporting Goods Association. First Recognition Banquet held. WDSRA hosts first State Special Olympic Bowling competition at Wheaton Bowl. WDSRA hosted its first mainstream spring break trip in cooperation with the Wheaton Park District. WDSRA hosted its first wilderness trip for the mentally ill.



- 1983** Co-sponsored a summer program for students of the DuPage/ West Cook Special Education Cooperative with other Special Recreation Associations. First Very Special Arts program offered through day camp. WDSRA programmed for Sunnyside Residential School. WDSRA chartered their first Cub Scout pack. Cooperative Associations for Special Education afterschool and summer camp including door-to-door transportation began.
- 1984** Offered Disability Awareness Day for 3,000 Girl Scouts. Began cooperative swim program with BR Ryall YMCA. WDSRA Board began development of first Long-Range Plan. WDSRA chartered first Girl Scout troop. Special Education in DuPage County afterschool program including door-to-door transportation began. Co-op summer school program for severely mentally handicapped individuals was formed.
- 1985** Administered regional track meet for Cerebral Palsy and wheelchair athletes. WDSRA offered the Very Special Olympics. WDSRA went on a Canadian Wilderness Camping trip for the mentally challenged. A volunteer program was started for high school students and business people. Programming began for Marianjoy pain patients.
- 1986** WDSRA's tenth anniversary. Bloomingdale Park District joined the association. WDSRA joined Suburban Risk Management Pool. In house safety committee formed. Intern program and manuals were developed. Ski Clinic, in cooperation with Marianjoy, is formed for pain patients. WDSRA held a six day camping trip for the mentally handicapped. Parents/child sign language class began. Adaptive Physical Education program with Special Education in DuPage County began. Visually Impaired support group was established.
- 1987** City of Warrenville joined the association. Wheaton Kiwanis sponsored first “Splash & Bash” event. First trip for people with physical challenges offered to Hoover Outdoor Center. WDSRA had four international Special Olympics athletes. WDSRA held the first Arts Recital. WDSRA had its first participant airplane trip. First youth basketball team was formed. Community service volunteers joined WDSRA.
- 1988** Winfield Park District joined the association. First Holiday (Christmas) dinner dance offered. First Learning Disability/ Behavioral Disability trip was taken. WDSRA purchased its first accessible bus. Day Camps structure changed to four day per week, with optional Friday fieldtrips.

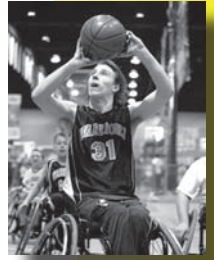


# WDSRA HISTORY

- 1989** Formation of wheelchair sports programs and clinics. Wheelchair sports programs created were tennis and fishing. Public Information and Staff Enrichment Coordinator positions added. First Caregivers Conference for Parents offered. WDSRA Medical Advisory Board was formed. WDSRA's first cable show was produced. WDSRA co-sponsored DuPage Arts Alliance Council.
- 1990** Roselle Park District joined the association. Second Long Range Plan completed. Performing Arts Group, TROOP Drama, formed. Participant-cable access program "Video Adventures" first produced. 3-V Carp Tournament benefits WDSRA. WDSRA dancers practice with the Bolshoi Ballet through Very Special Arts.
- 1991** First aquatics swim meet. Drop-In Center for mentally ill adults started in Naperville. Chicago Northwestern Railroad offers trip to Union, Illinois. Auro program started for youth at risk.
- 1992** First WDSRA Inclusion Coordinator position created and WDSRA joins Park District Risk Management Agency (PDRMA).
- 1993** Agency's fundraising arm, WDSRA Foundation, established. WDSRA earns second NRPA Gold Medal Award for Outstanding Programming for People with Disabilities.
- 1994** Japanese visitors study American programs for people with disabilities and selected WDSRA as site visit. Foundation hosts first auction and Hall of Fame inductee.
- 1995** First year to co-sponsor "Serena's Song", world's only accessible hot air balloon. Sponsored Cleveland Ballet Dancing Wheels at College of DuPage; workshop participants came from as far as Milwaukee. Foundation sponsors first Women's Golf Outing.
- 1996** Carol Stream Park District joined the association.
- 1997** Acquired new administrative building through joint purchase with Carol Stream Park District.
- 1998** Legislation passed that allowed the City of Warrenville to transfer membership to the park district. Positive Recreational Opportunities (PRO) League started.
- 1999** Warrenville Park District became an official member of the association. WDSRA's International Special Olympian, Joe Kirkwood was the first Illinois athlete chosen to compete in the 26.2 mile-marathon.
- 2000** WDSRA's Boccia athletes competed at the National Games Festival for the Disabled in New London, Connecticut, for the first time.
- 2001** WDSRA celebrates 25th Anniversary, honors founders, first annual Family Fest, WDSRA cookbook published.
- 2002** WDSRA one of 11 SRAs to share \$450,000 Vitamin Settlement Grant.



- 2003** Senate Bill 1881 is passed, removing Special Recreation tax from the tax cap.
- 2004** WDSRA's Wheelchair Basketball Team wins first Illinois High School Association Wheelchair Basketball Tournament, finishes fourth in nation.
- 2005** Rec and Roll day program created for adults. Aktion club formed.
- 2006** Windy City Warriors won the Illinois High School Association wheelchair basketball title for the second time. WDSRA offers Special Olympic weightlifting.
- 2007** WDSRA Windy City Warriors softball team takes 1st place at **FIRST EVER** Junior Softball Nationals Tournament! WDSRA offers Special Olympic Floor Hockey. WDSRA provides over 1,000 inclusion participations. Rec and Roll expands with a second location in Carol Stream when WDSRA buys administrative building from Carol Stream Park District. WDSRA first SRA to receive the Illinois Government Finance Officer's Association Certificate of Achievement for Excellence in Financial Reporting. First Annual Music Recital is held. Needs Assessment Survey conducted. WDSRA receives high marks.
- 2008** WDSRA offers first "Speak-Up Camp" for children who stutter with Special Recreation Association of Lake County and the Stuttering Foundation. Supporters run the Chicago Marathon to raise funds for WDSRA. WDSRA's "green efforts" are rewarded by receiving flag from SCARCE at DuPage County Board meeting. Girl Scout Troop 200 forms for girls 6-15. Foundation holds first Jump-A-Thon to raise funds, over \$20,000 raised.
- 2009** WDSRA one of five agencies nationally selected to participate in pilot inclusion study for Johns Hopkins University and Bubel/Aiken Foundation. WDSRA provides over 1,500 inclusion requests. WDSRA implements the Young Athletes Program of Special Olympics. According to Illinois Special Olympics, WDSRA serves more Special Olympians than any other SRA. Community Cruisers is piloted with Wheaton/Warrenville School District 200's transition program with 13 students.
- 2010** Ackerman Sports Complex opens and WDSRA has its first dedicated sports times in facility, 99-year lease, opens 3rd Rec and Roll program and starts 2nd Drop-in Center for young adults with mental illness. WDSRA named "Naperville's Greatest Asset" in city survey of families with special needs. "SRA's Got Talent" wins outstanding special event award from Illinois Therapeutic Recreation Section of the Illinois Parks and Recreation Association.
- 2011** Jane Hodgkinson retires from Association and Sandy Gbur is hired as third director of WDSRA.



# 2010/11 WDSRA PARTNERSHIPS

## WDSRA Program Partners

Area alternative schools  
Area libraries  
Area schools  
Area special education cooperatives  
Area special recreation associations  
BDI Playhouse, Naperville  
B. R. Ryall YMCA, Glen Ellyn  
Brunswick Zone, Carol Stream, Naperville, Roselle  
Chicago Area Tandem Society  
Comcast, Inc.  
DuPage Child and Family Connections  
DuPage County Convalescent Center, Wheaton  
Holiday Inn, Carol Stream  
Jaffe Productions, Inc.  
Joliet Bolingbrook Special Recreation Association  
Krohler YMCA, Naperville  
Member Park Districts  
Naperville Resource Center  
Naperville YMCA  
National Alliance on Mental Illness  
North Central College, Naperville  
Peoples Resource Center  
Roselle Park District  
Safety Town, Naperville  
Sunshine Through Golf Foundation, Lemont

## Human Services Cooperatives

Alden Village, Alden East & Alden West, Bloomingdale  
College Church Group Home, Wheaton  
Cupertino Home, Warrenville  
Katherine Manor, Naperville  
Little Friends, Naperville  
Marklund Children's Home  
Ray Graham Association  
St. Coletta of Wisconsin, Roselle  
West Chicago Group Home

## Volunteer Partnerships

Aurora University  
Central DuPage Kiwanis  
Glenbard West High School, Glen Ellyn  
Glen Crest Middle School, Glen Ellyn  
Glen Ellyn Kiwanis  
Lake Park High School, Roselle  
North Central College Cardinals In Action  
North Central College Special Populations Class  
Roselle Rotary  
St. Isidore Catholic Church, Bloomingdale  
St. Petronille Catholic Church School, Glen Ellyn  
St. Walters Catholic Church, Roselle  
Trinity Lutheran Church, Roselle  
West Chicago High School  
Wheaton Bible Church  
Wheaton Kiwanis

